

# Bombardier Global 6000

2013

An Ultra Long Range Intercontinental Three Cabin Aircraft, with Full Cabin Connectivity.



© David Reeves

## Your Aircraft Sales Team

### **Darren McGoldrick**

Vice President, Asia-Pacific  
M. +61 419 494 186  
darren.mcgoldrick@luxaviation.com

### **Richard Porter**

Business Development Director  
M. +61 418 253 153  
richard.porter@luxaviation.com

Specifications and/or descriptions are provided as introductory information only and do not constitute representations or warranties. Verification of specifications remain the sole responsibility of purchaser. Photographs and images may have been modified to remove logos, registration marks, or other identifying information to protect the privacy of the aircraft's current owner. The aircraft is subject to prior sale, lease, and/or removal from the market without prior notice.

## Highlights

- KA JetWave installed 2023
- Only operated as a Part 91 private ops aircraft
- 8C inspection completed at Bombardier 2023
- Interior in impeccable 13 passenger configuration

## Aircraft

Configuration	13 Passengers
Make/Model	Bombardier Inc BD-700-1A10 (G6000)
Serial Number	9546
Registration Number	T7-RIC
Current Hours	3,010.19
Current Landings	1,033
Date of Manufacture	10 May 2013
Date Entered Service	26 Dec 2013
Mx Tracking Programme Name	CAMP
Parts Programme Name	Bombardier Smart Parts Preferred
Certification	Part: 91
Commercial	No

## APU

### Honeywell Inc RE220 (GX)

Serial Number	P-674
Current Hours	2,480
Current Cycles	2,313
APU Programme Name	Honeywell MSP Gold
Contract Number	440136087

## Engines

### Rolls-Royce Deutschland BR700-710A2-20

	Engine 1	Engine 2
Serial Number	22223	22222
Current Hours	3,010.19	3,010.19
Current Cycles	1,039	1,039
Next HSI/MPI	On Condition	
Next OVHL/CZI	On Condition	
Engine Programme Name	Rolls-Royce Corporate Care Enhanced	

# Navigation Compliance

RVSM	MNPS	PRNAV	FANS
CPDLC	ADS-B	WAAS	LPV
TCAS 7.1	Datalink	LINK 2000+	RNP

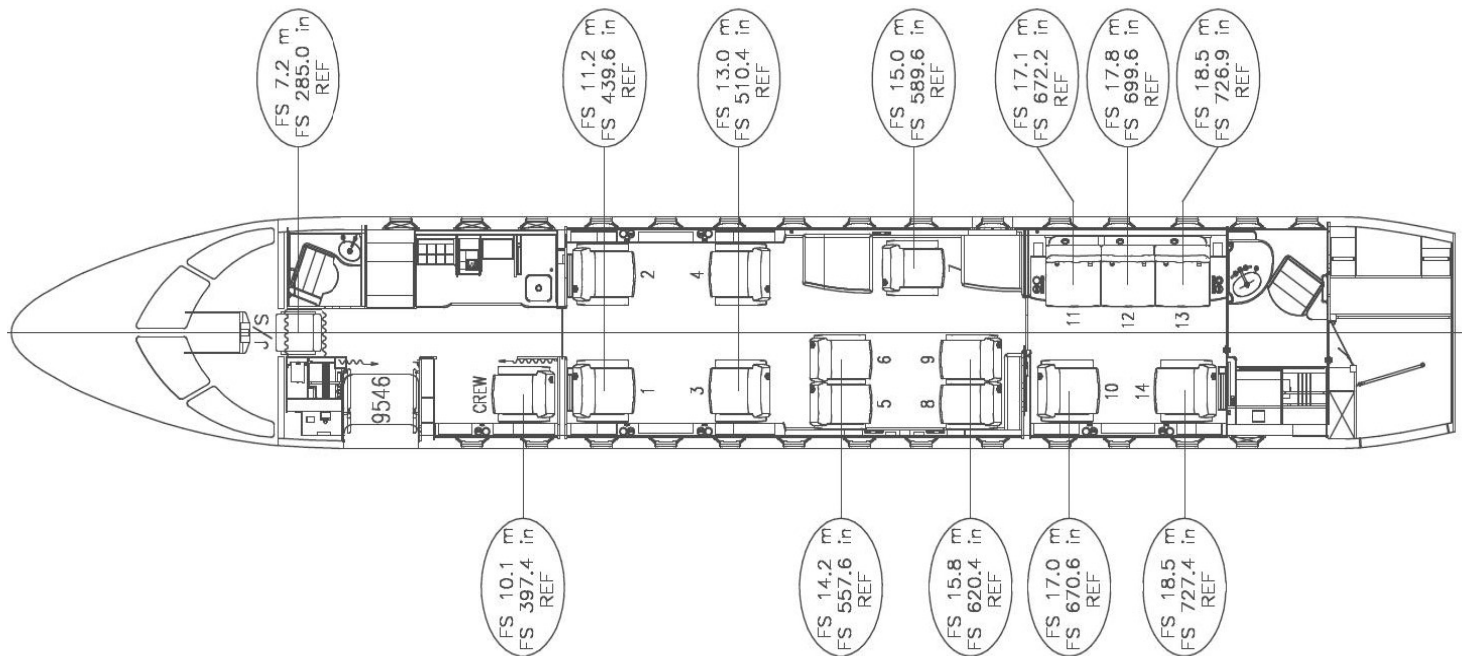
# Avionics

Quantity	Description	Part Number
3	FMS	822-2142-101
2	IFIS	822-2142-101
1	TXPDRs	622-9210-501
2	ADF	622-7384-001
2	DME	822-1466-001
2	RAD Alt	822-0615-207
2	HF Com	822-0101-002
2	SELCAL	822-1864-177

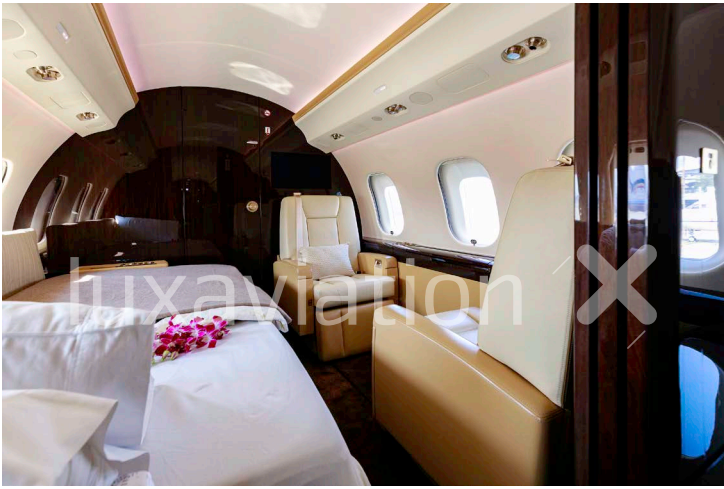
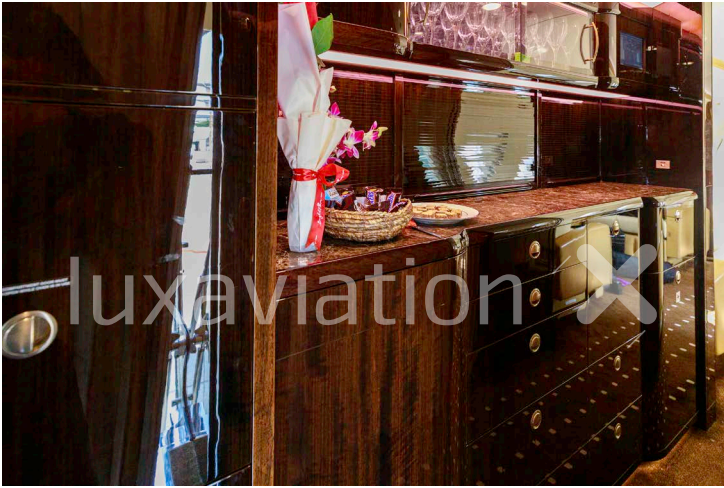
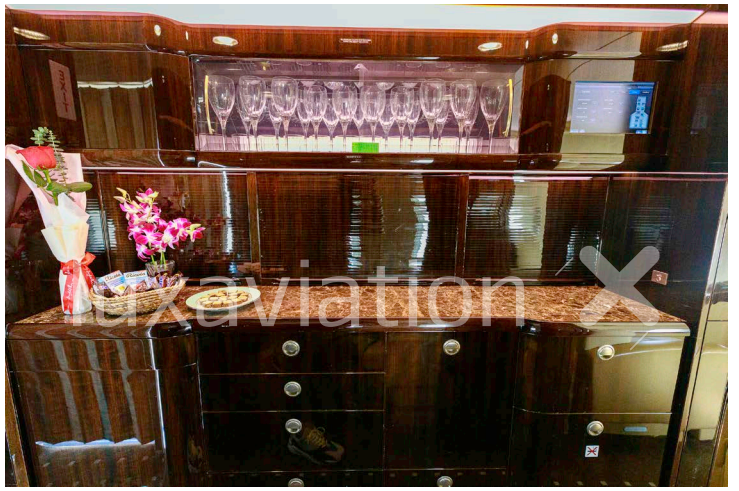
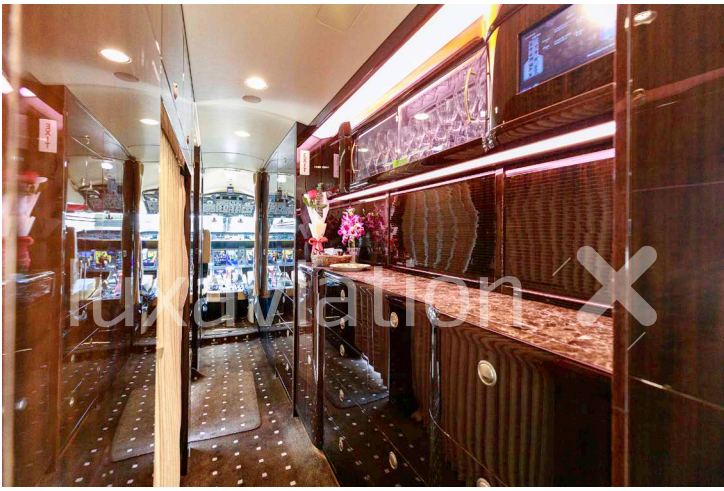
# Exterior

Titanium (Metallic) Base, Blue Horizontal Stripe

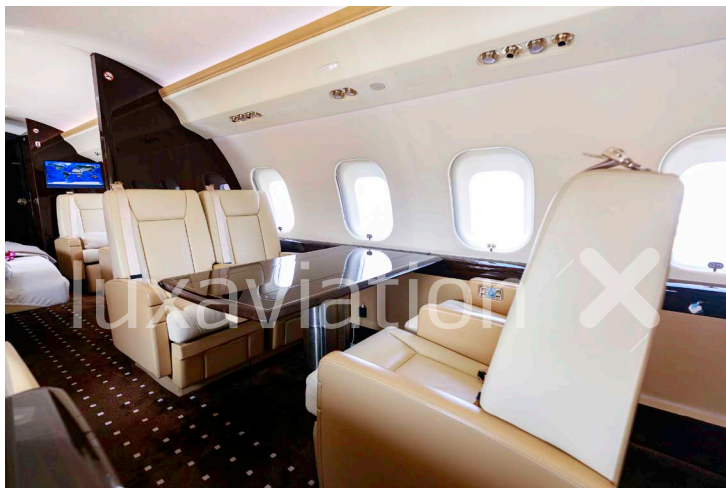
# Floorplan











Your Aircraft Sales Team

**Darren McGoldrick**

Vice President, Asia-Pacific  
M. +61 419 494 186  
darren.mcgoldrick@luxaviation.com

**Richard Porter**

Business Development Director  
M. +61 418 253 153  
richard.porter@luxaviation.com

Specifications and/or descriptions are provided as introductory information only and do not constitute representations or warranties. Verification of specifications remain the sole responsibility of purchaser. Photographs and images may have been modified to remove logos, registration marks, or other identifying information to protect the privacy of the aircraft's current owner. The aircraft is subject to prior sale, lease, and/or removal from the market without prior notice.